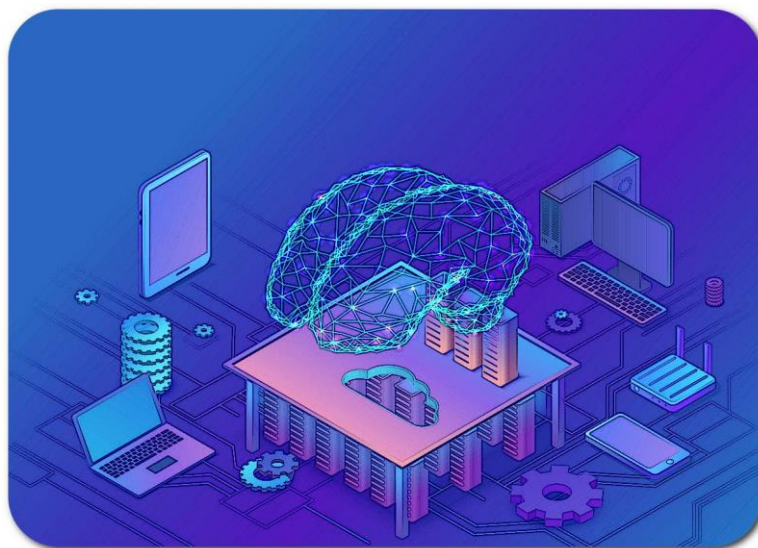


SafeBoosC-III

Follow Up



Zuzana Korčeková, MD

Institute for the Care of Mother and Child

Prague Czech Republic

Institute for the Care of Mother and Child



Follow up I

- **Overall 10 patients** were eligible for follow-up

9 patients completed

1 patient lost to follow-up

0 patients died post-discharge



In total 60 patients
will be followed up
from CZ01

Follow up II

- **Compliance 90 %**

a) Follow-up team

b) Follow-up of high risk infants

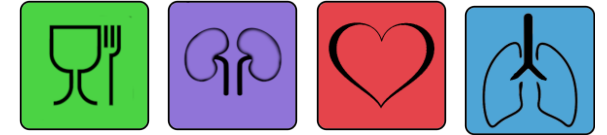
- Congenital diaphragmatic hernia
- Therapeutic hypothermia
- Extreme prematurity (SafeBoosC-III)

c) Psychosocial support for family



Challenges I

- **Chronic health problems**



- Isolated failure to thrive? (but normal neurodevelopment)
- Subjective? (problems in everyday life)

Has the child been
diagnosed with any
chronic health
problems?

☐ Yes ☐ No ☐ Unknown

[\[info\]](#)

Any problem which has been diagnosed by a doctor and which 1) is expected to last more than a few months, 2) causes problems in everyday life, and 3) is a risk of early death or disability

Challenges II

- **Bayley assessment**
- Wide range of age (18 – 30 months)
- **Visual impairment**
- International classification of moderate VI (diopetre)

Has the child been
diagnosed with a
visual impairment?

☐ Yes ☒ No ☐ Unknown [\[info\]](#)

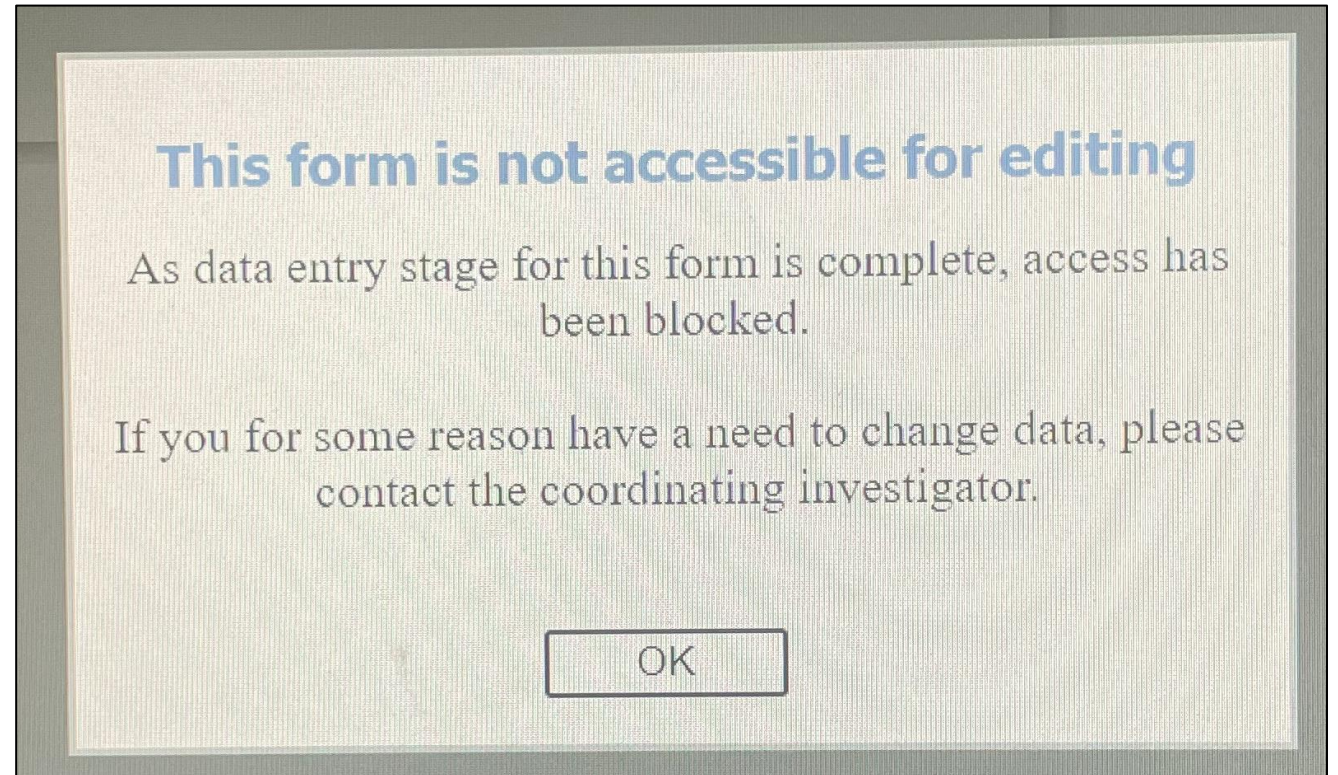
Vision impairment defined as:

Moderately reduced vision but better than
severe visual impairment

Or blind in one eye with good vision in
the contralateral eye

Challenges III

- Technical problems
- Temporary
- Quickly resolved



Greatest Motivation & Limitation

**Thank you
for your attention !**

