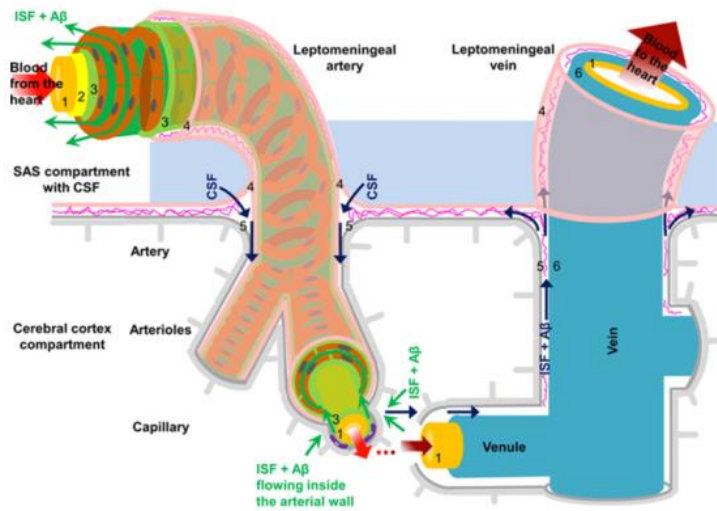
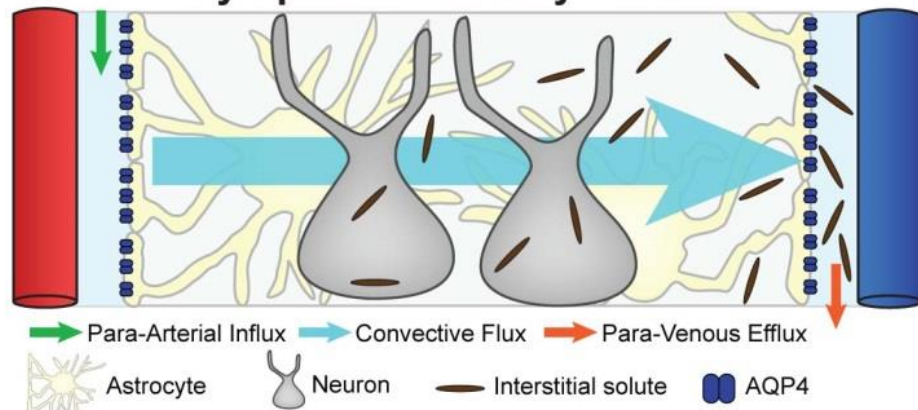


# Rigshospitalet Functional Imaging Unit



## Glymphatic Pathway Function



# Brain drainage and Blood-Brain Barrier in neuroinflammatory diseases

Auditorium 2  
Rigshospitalet, Entrance 44  
Blegdamsvej 9, 2100 København Ø



**ORGANIZERS**

**Henrik B. W. Larsson & Stig P. Cramer**

Functional Imaging Unit

[www.fiunit.dk](http://www.fiunit.dk)

Dept. of Clinical Physiology, Nuclear Medicine and PET

Rigshospitalet, Copenhagen University Hospital

Nordre Ringvej 57, Glostrup, Denmark

**e-mail: [henrik.bo.wiberg.larsson@regionh.dk](mailto:henrik.bo.wiberg.larsson@regionh.dk)**

**[stig.praestekjaer.cramer@regionh.dk](mailto:stig.praestekjaer.cramer@regionh.dk)**

**DATE**

28<sup>th</sup> November

**LOCATION**

Auditorium 2

Rigshospitalet, Entrance 44

Blegdamsvej 9, 2100 København Ø

**PARTICIPATION**

Free

**SUPPORTED BY**

Independent Research Fund Denmark

November 28<sup>th</sup>

Chairmen: Henrik Larsson & Ian Galea

## Brain drainage

12.00-12.30 **Professor Roy Weller, MD, PhD**

*Lymphatic drainage of the brain in health and disease*

12.30-13.00 **Professor Majken Nedergaard, MD, DMSc**

*The Glymphatic System*

13.00-14.00 **Assistant Professor Ian Galea, MD, PhD**

*Interstitial fluid formation*

13.30-14.00 **Coffee**

## The blood-brain barrier and neuroinflammatory diseases

14.00-14.20 **Professor Jette L. Frederiksen, MD, DMSc**

*Multiple sclerosis general overview*

14.20-14.50 **Professor Finn Sellebjerg, MD, DMSc**

*Biomarkers of cellular inflammation in MS*

14.50-15.10 **Aravinthan Varatharaj, BMBCh**

*Blood-brain barrier in systemic inflammation*

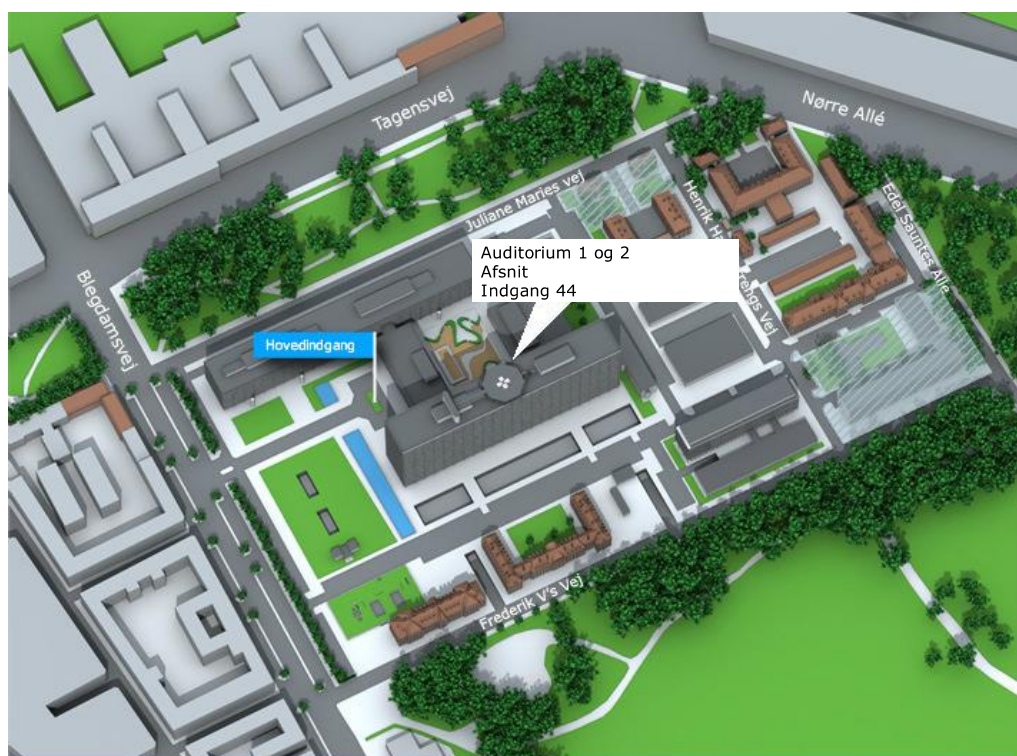
15.10-15.30 **Stig P. Cramer, MD, PhD**

*Imaging of the blood-brain barrier in MS*

15.30-15.50 **Professor Henrik BW Larsson, MD, DMSc**

*Future directions in functional brain imaging: Oxygen consumption, lactate production and fluid motion*

15.50-16.35 **Round table discussion: *Important fundamental issues in brain fluid dynamics.* Chair: Ian Galea and Henrik Larsson**



Auditorium 1 og 2

Auditorium 1 og 2  
Afsnit  
Indgang 44  
Blegdamsvej 9  
2100 København Ø



Rigshospitalet