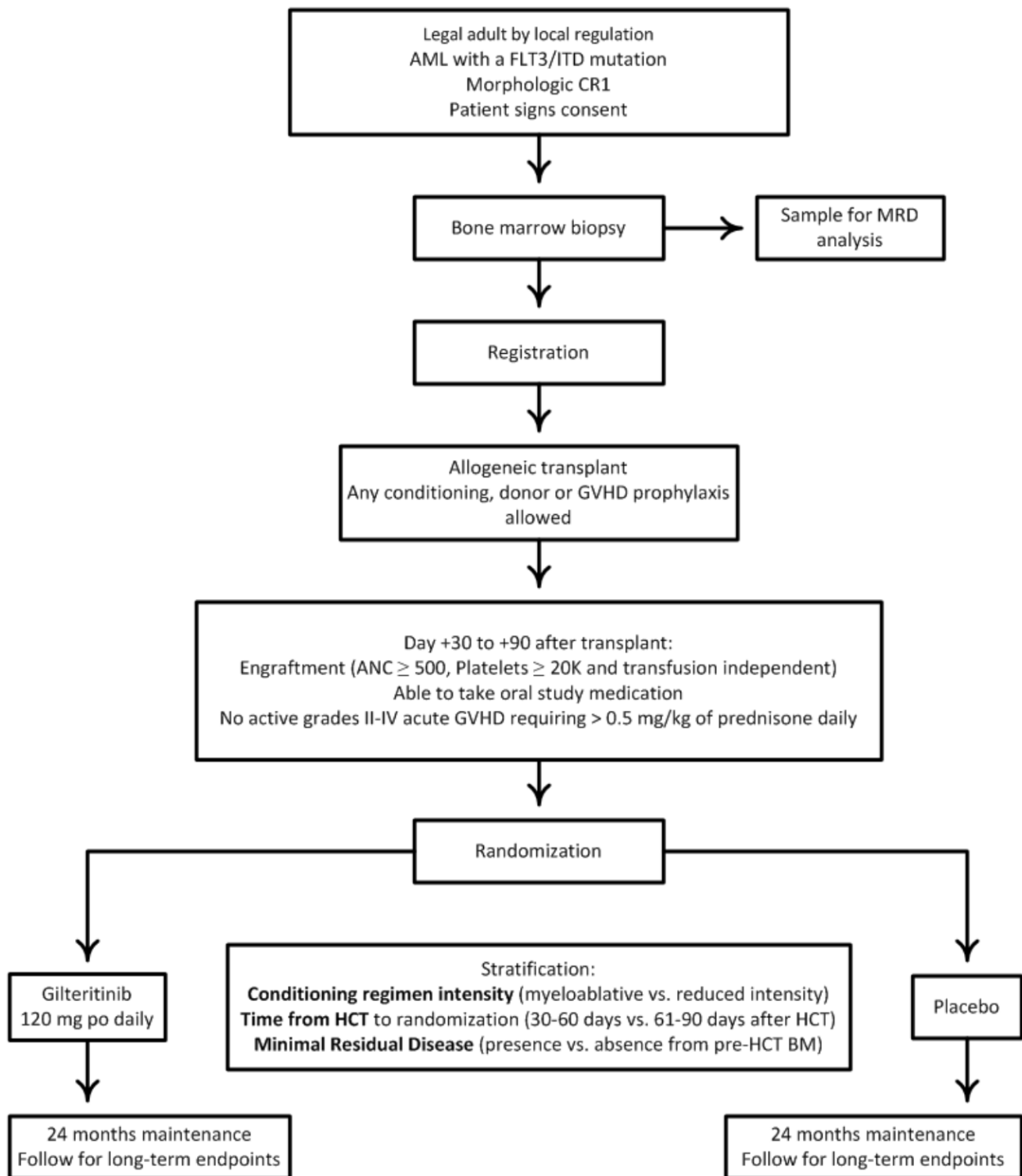


## OUTLINE OF TREATMENT PLAN



Abbreviations: AML: acute myeloid leukemia; ANC: absolute neutrophil count; BM: bone marrow; CR1: first morphologic complete remission; FLT3: FMS-like tyrosine kinase 3; GVHD: graft-versus-host disease; HCT: hematopoietic stem cell transplant; ITD: internal tandem duplication; MRD: minimal residual disease.